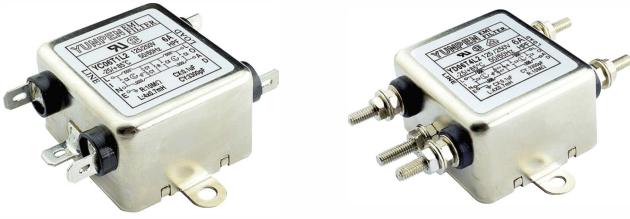


YC, YD-L2 SERIES (Single Phase Two-Stage Filters)



Features

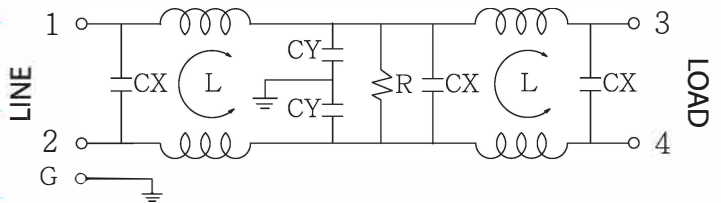
- Two stage filters designed to provide high performance in suppressing both line-to-line and line-to-ground noise for most digital electronic equipment.
- The rated current can be offered up to 10 amps.
- Various output selections such as fast-on terminal, M4 screw terminals
- Low leakage current version upon requested.
- Approved by UL, CSA, VDE and CE
- Custom-specific versions are available on request
- Application for Electrical and electronic equipment, Household equipment, Automation equipment, Fitness machine, Various noisy applications requiring high filter performance

Technical Specification

Rated voltage	125/250VAC
Rated currents	1 to 10A
Operating frequency	50/60Hz
Hipot rating(Line-to-line)	1450VDC
Hipot rating(Line-to-ground)	2250VDC
Operating temperature	-25~+85°C
Safety compliance	YC series (UL,CSA,CE) ; YD series (UL,CSA,VDE,CE)

*UL, CSA except YC (10A), YD (10A)

Typical electrical schematic

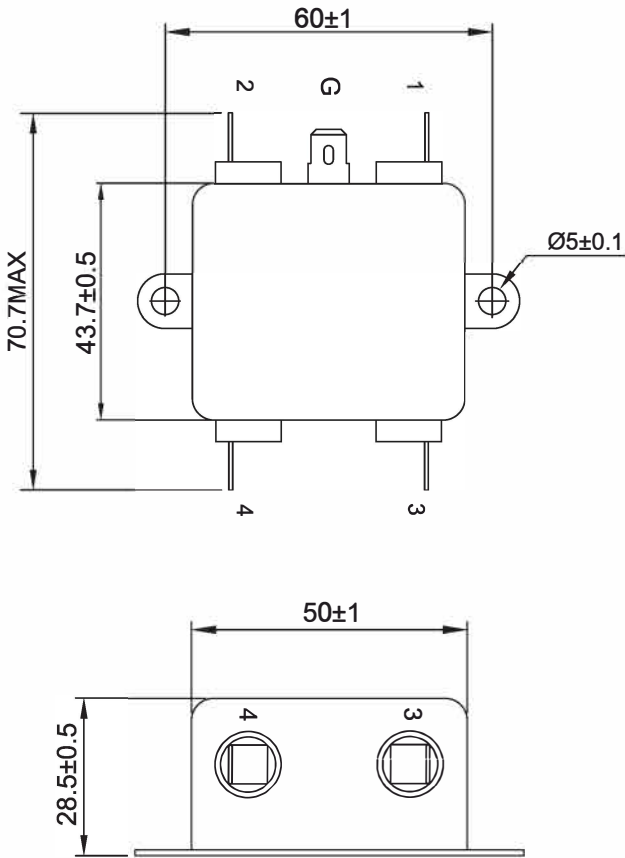


Filter Selection Table

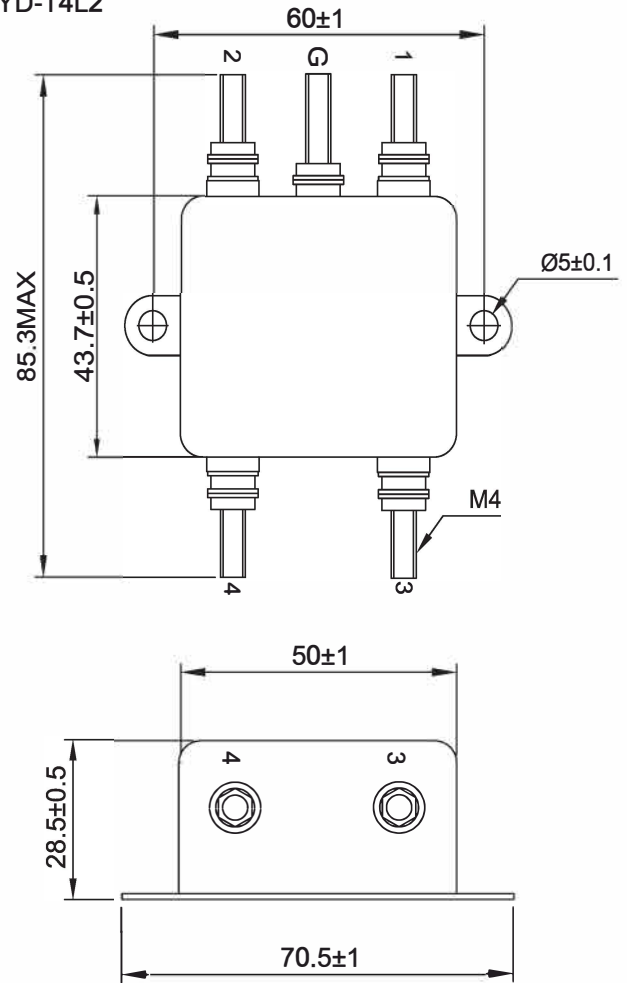
Part No.	Rated Current (A)	Inductance L(mH)	Capacitance CX(μ F)	Capacitance CY(pF)	Resistance R(ohm)	Output connections
YC01T1L2	1	3.7	0.1	3300	10M	Fast-on terminal
YC03T1L2	3	1.8	0.1	3300	10M	
YC06T1L2	6	0.7	0.1	3300	10M	
YC10T1L2	10	0.3	0.1	3300	10M	
YD01T4L2	1	3.7	0.1	3300	10M	M4 Screw terminals
YD03T4L2	3	1.8	0.1	3300	10M	
YD06T4L2	6	0.7	0.1	3300	10M	
YD10T4L2	10	0.3	0.1	3300	10M	

Physical Dimensions: (mm)

YC-T1L2

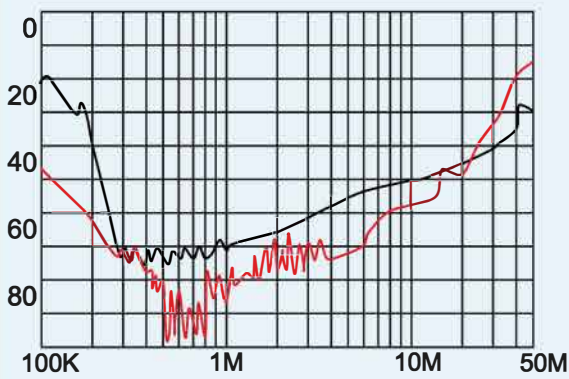


YD-T4L2

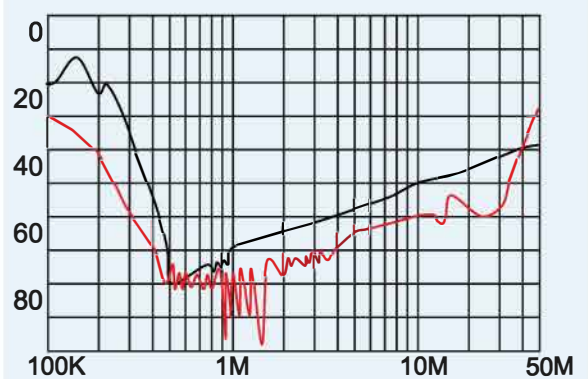


Typical filter attenuation (Common mode — Normal mode —)

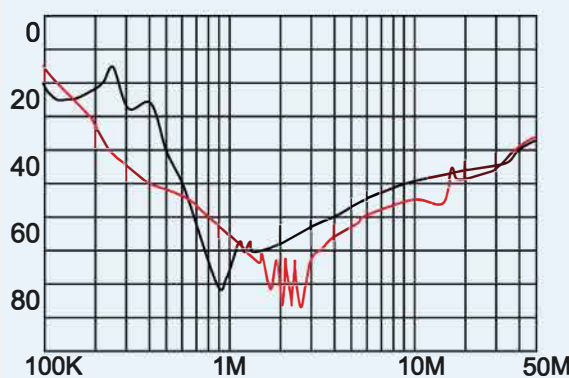
YC, YD-1



YC, YD-03



YC, YD-06



YC, YD-10

